

Trumpet 1

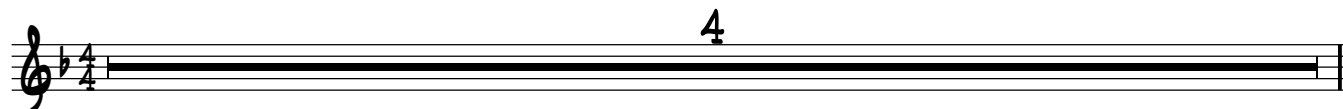
Valerie

(Mark Ronson)

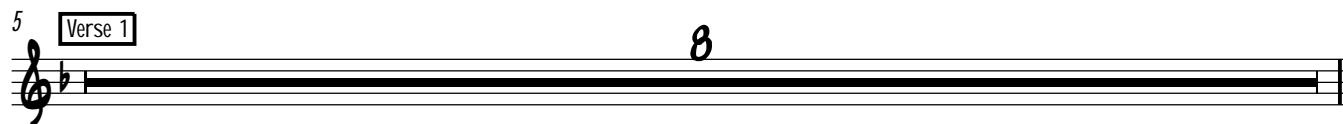
Arranged By
Daniel Houghton

q = 110

4



5 Verse 1 8



13 Bridge




21



25



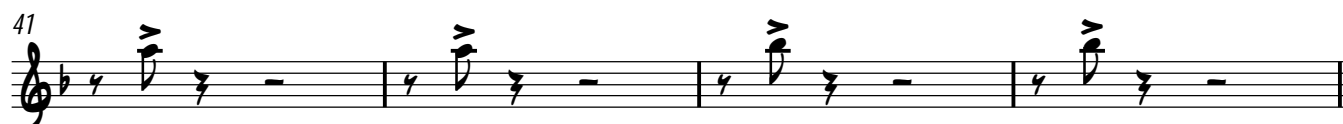
29 Verse 2 8



37 Verse 3



41



45 Bridge



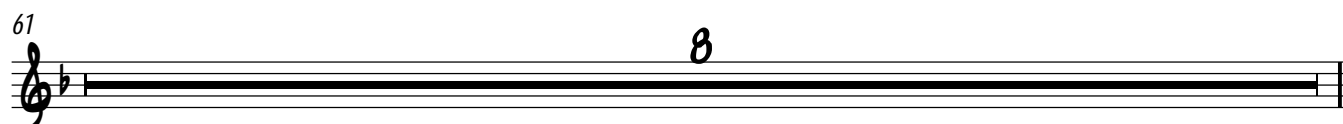
53



57



61 8



69 Bridge

77

81

85

89

Trumpet 2

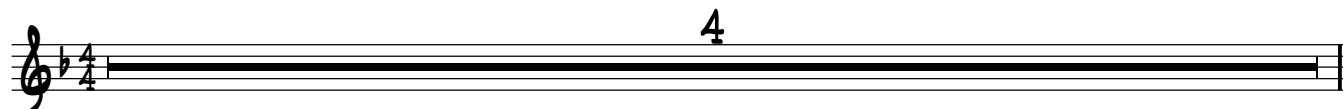
Valerie

(Mark Ronson)

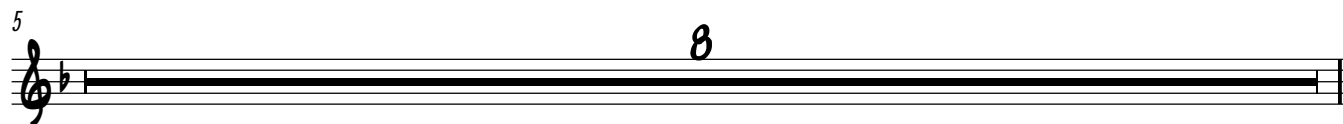
Arranged By
Daniel Houghton

q = 110

4



5 8



13



21



25



29 8



37



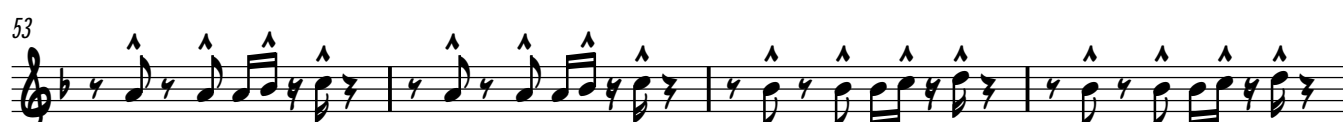
41



45



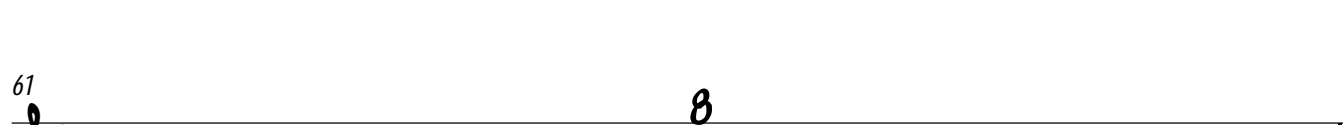
53



57



61 8



69

77

81

85

89

Trumpet 3

Valerie
(Mark Ronson)

Arranged By
Daniel Houghton

q = 110

4 8



13



21



25



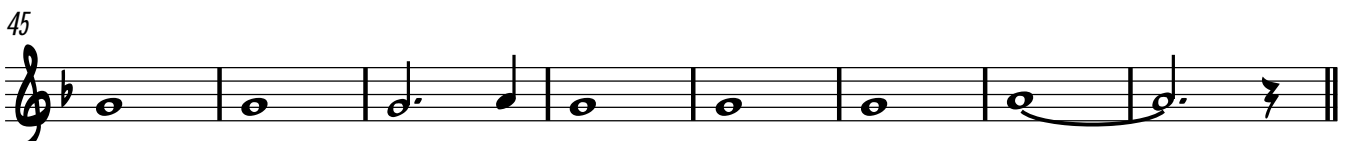
29 8



40



45



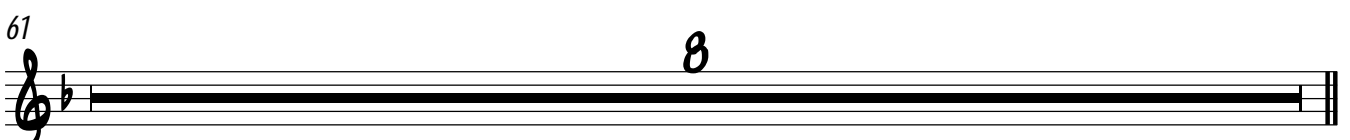
53



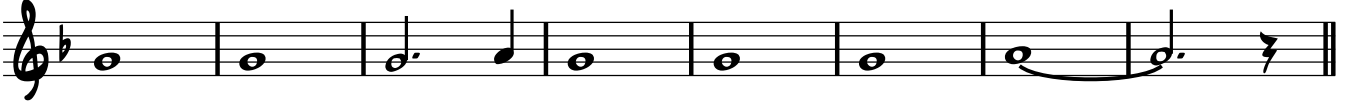
57



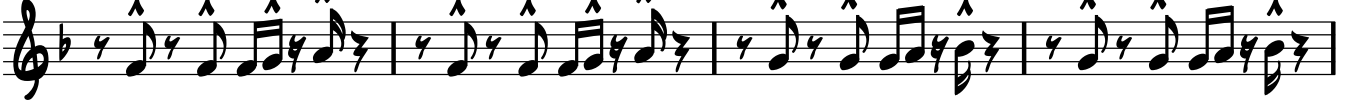
61 8



69



77



81



85



89



91



Trumpet 4

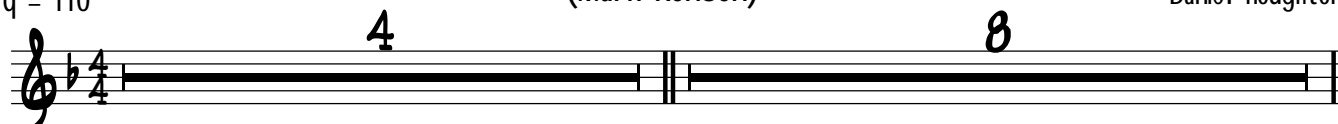
Valerie

(Mark Ronson)

Arranged By
Daniel Houghton

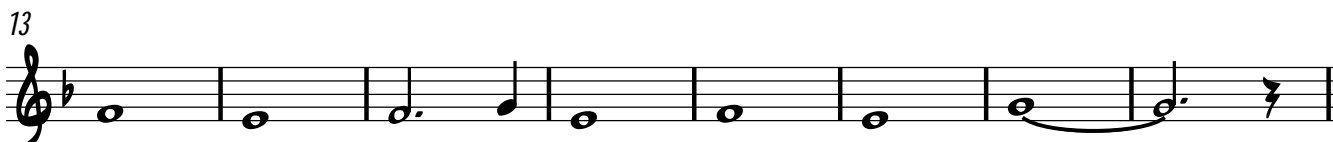
q = 110

4 8



A musical staff in 4/4 time with a key signature of one flat. It begins with a 4-measure rest, followed by a double bar line, and then an 8-measure rest.

13



Musical staff containing measures 13 through 20. The notes are: G4 (half), A4 (quarter), B4 (quarter), C5 (quarter), B4 (quarter), A4 (quarter), G4 (quarter), F4 (quarter), E4 (quarter), D4 (quarter), C4 (half).

21



Musical staff containing measures 21 through 24. The notes are: G4 (quarter), A4 (quarter), B4 (quarter), C5 (quarter), B4 (quarter), A4 (quarter), G4 (quarter), F4 (quarter), E4 (quarter), D4 (quarter), C4 (half).

25



Musical staff containing measures 25 through 28. The notes are: G4 (quarter), A4 (quarter), B4 (quarter), C5 (quarter), B4 (quarter), A4 (quarter), G4 (quarter), F4 (quarter), E4 (quarter), D4 (quarter), C4 (half).

29 8



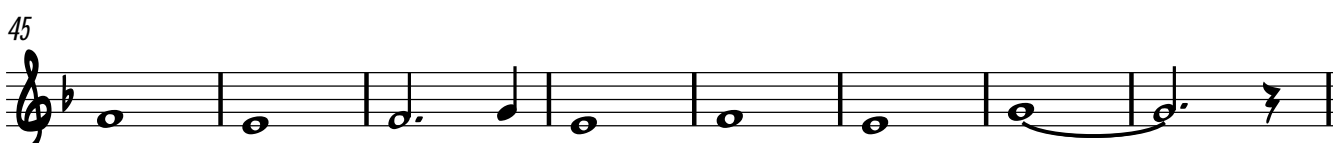
Musical staff containing measures 29 through 32. It starts with an 8-measure rest, followed by three measures of a quarter note with an accent (G4), a quarter rest, and a half rest.

40



Musical staff containing measures 40 through 44. It consists of five measures of a quarter note with an accent (G4), a quarter rest, and a half rest.

45



Musical staff containing measures 45 through 52. The notes are: G4 (half), A4 (quarter), B4 (quarter), C5 (quarter), B4 (quarter), A4 (quarter), G4 (quarter), F4 (quarter), E4 (quarter), D4 (quarter), C4 (half).

53



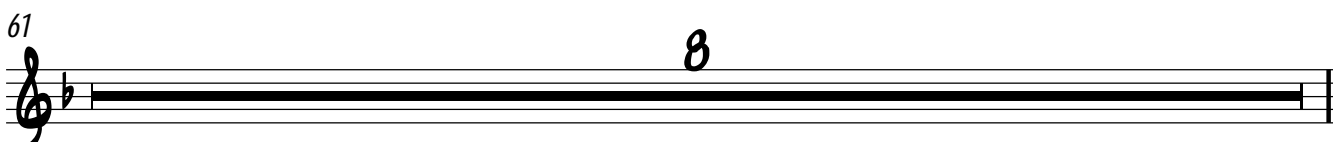
Musical staff containing measures 53 through 56. The notes are: G4 (quarter), A4 (quarter), B4 (quarter), C5 (quarter), B4 (quarter), A4 (quarter), G4 (quarter), F4 (quarter), E4 (quarter), D4 (quarter), C4 (half).

57



Musical staff containing measures 57 through 60. The notes are: G4 (quarter), A4 (quarter), B4 (quarter), C5 (quarter), B4 (quarter), A4 (quarter), G4 (quarter), F4 (quarter), E4 (quarter), D4 (quarter), C4 (half).

61 8



Musical staff containing measures 61 through 68. It consists of an 8-measure rest.

69



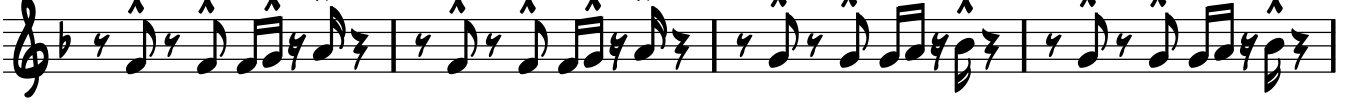
77



81



85



89



91

