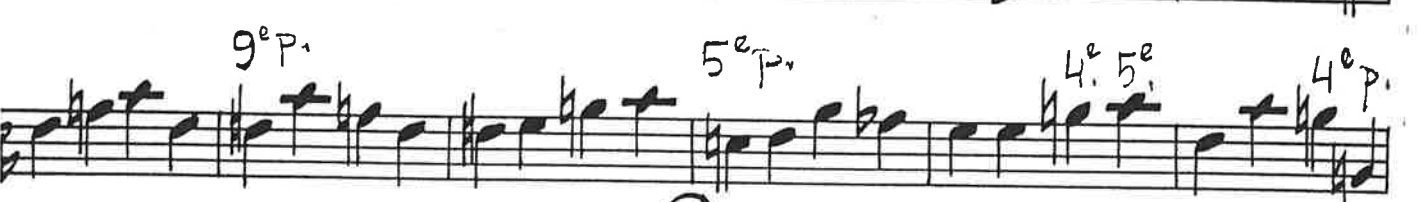
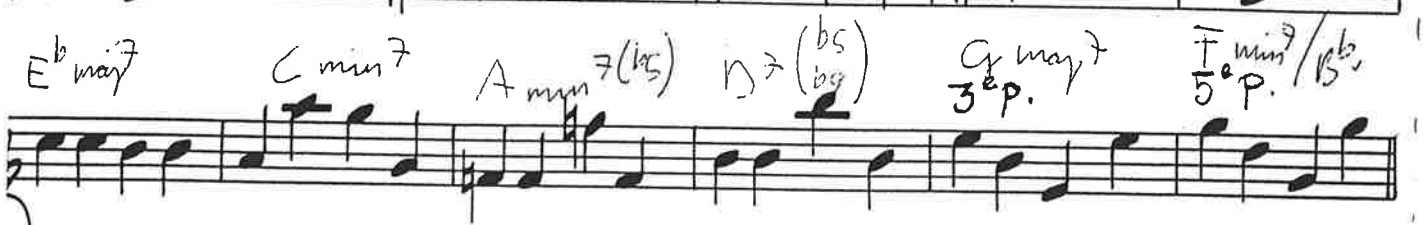


52

BASS

MOST ROYAL COUNT (F)

Easy Swing ♩ = 120



SAMMY NESTICO

5^o p.

(D)

4^o p.

5^o p.

4^o p.

5^o p.

(E) SOFTLY

3^o p.

5^o p.

DESC. — — — —

4^o p.

5^o p.

(C)

3^o p.

5^o p.

9^o p.

5^o p.

4^e 5^e

4^e p.

5^o p.